

*Wine Rack* 

10 High Street, Wimborne Minster. Tel: 01202 848977

**12 Exclusive New Wines  
In Store Now !**

*Free Wine Tastings Every Weekend  
Glass Loan - Party Planning - S.O.R.  
Free Delivery - Great Offers  
6 for 5 on all Champagne (restrictions apply)*



**Christopher C.  
Batten**

*Independent Estate Agents*

WISHING WIMBORNE DRAMA  
EVERY SUCCESS

**Christopher C. Batten Estate Agents**

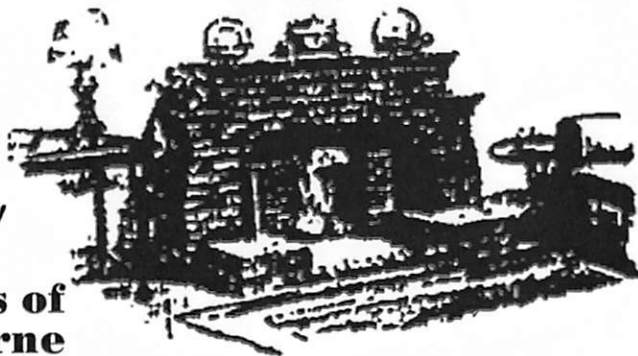
15 East Street, Wimborne, Dorset, BH21 1DT  
Tel: (01202) 841171 Fax: (01202) 842714  
Email: [properties@christopherbatten.com](mailto:properties@christopherbatten.com)



## sticks and stones (fireplaces)

Traditional & Modern Fireplaces

*Always a  
warm  
welcome in  
the hottest  
spot in town!*



 **Patrons of  
Wimborne  
Drama**

1-2 West Row, Wimborne Minster BH21 1LA  
Tel: 01202 880170 Fax: 01202 881036

# CLARKE & PARTNERS

INDEPENDENT

INVESTMENTS • PENSIONS  
TAX PLANNING • SCHOOL FEES  
MORTGAGE ADVICE \*

For the Best Advice, financially speaking, contact us at:  
Purbeck House, 5 West Borough, Wimborne BH21 1LT  
Tel: 01202 889707 Fax: 01202 885808 e.mail [clarke\\_pts@aol.com](mailto:clarke_pts@aol.com)

Clarke & Partners Independent is the trading name of Elder Clarke & Co.  
Ltd.

A Member of The Burns-Anderson Independent Network PLC  
for investment business

Regulated by the Personal Investment Authority

\* Mortgages are not regulated by the PIA



Personal Investment Authority



A warm welcome awaits you  
from Ron, Joanne & Staff at

## The Rising Sun

38 East Street  
Wimborne

Open from 9.30am Mon-Sat  
And from 10.30am Sun

LIVE MUSIC  
HOME COOKED FOOD  
QUIZ NIGHTS  
FAMILIES WELCOME  
BIG SCREEN / SKY TV  
TRADITIONAL SUNDAY LUNCHES  
DISCO NIGHT



We're open 7 days a week  
ready to offer you the  
unique advantages of our  
experience and expertise

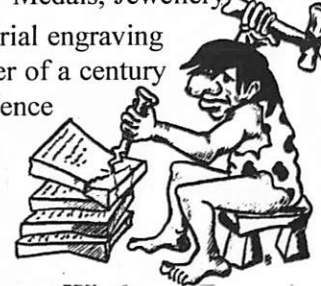
01202 856666

55 High Street  
Wimborne Minster  
[www.goadsby.co.uk](http://www.goadsby.co.uk)

Sales • Lettings • Mortgages

## Engraving Problems?

- We supply & engrave Trophies, Cups, Medals, Jewellery
- Industrial engraving
- Quarter of a century experience



**Wimborne Engraving**  
14a Mill Lane  
Wimborne  
Tel/Fax  
01202 886373

**You don't have  
to be a farmer to  
insure with us.**

- Horse and horsebox insurance
- 4 x 4 insurance
- Car insurance
- Home and contents insurance
- Business insurance



**NFU Mutual**  
The best in the country

For these and all your insurance needs  
call **Rob Baxter** on 01202 882937  
NFU Office, 7/8 The Cornmarket  
Wimborne Minster BH21 1JL

Do you regularly  
see our plays?

Then have you  
considered  
becoming a Patron?  
For a small annual  
subscription you  
receive:

- Discounted ticket prices
- Reserved, priority seating
- Free food & wine at the Patrons After-Show Party
- Quarterly newsletter
- Invitations to social events

To become a Patron  
speak to one of us after  
the show or contact  
Kate on 01202 894768

<http://website.lineone.net/~wimborne.drama>

Wimborne  
Drama always  
welcomes new  
members to its  
friendly club.

You don't have  
to be  
experienced,  
just love the  
theatre and be a  
good team  
player. Sense of  
humour a bonus

Contact our  
Secretary Kate  
Compiani to find  
out about our  
next meeting -  
01202 894768

# **WIMBORNE DRAMA**

**presents**

## **ARMS and the MAN**

by Bernard Shaw



**Directed by Enid Davies**

**8-11 May 2002**

**TIVOLI Theatre, Wimborne**



**Minster flowers**

INTERFLORA

8 The Square  
Wimborne Minster  
01202 884354

Fill her arms with flowers  
*Same day deliveries*

**BMI** *The Harbour Hospital*

The Harbour Hospital has 40 beds in private rooms with en suite facilities, 3 operating theatres and X-ray and Physiotherapy Departments. The hospital works in partnership with Poole Hospital NHS Trust enabling it to share in its extensive facilities.



The Harbour Hospital offers:

- Nursing staff with specialist expertise
- Recognition by all major private health insurers
- Agreed price surgery for those without insurance
- No waiting lists
- Health Screening for all ages
- Physiotherapy for a wide range of conditions

*The Harbour Hospital*  
St Marys Road Poole BH15 2BH  
01202 244200



*Retailer of fine hand-made  
English and Belgian chocolates*

**Loose Belgian diabetic chocolates**  
Fudge • Turkish Delight  
Fruit Jellies • Marzipans

Find us at The Square Corner  
7 The Square  
Wimborne Minster  
01202 881886

**Colourcraft**  
(Wimborne)

**THE BEST DECORATING  
STORE IN DORSET**

Dulux, Crown, Berger & Brolac  
Paint at competitive prices

*Large Wallpaper stock*  
Pattern Book loan service  
*Co-ordinating Fabrics and*  
*Curtain make-up service*  
Ceramic Tiles

*All decorating sundries*

**11 West Borough**  
(just off the Square)

**WIMBORNE**

**Tel: (01202) 882784**

*Wimborne  
Emporium*

Antiques & Collectables

Quality items  
bought & sold  
House clearances

COME AND BROWSE

9 West Borough  
Wimborne  
01202 883994

**KITCHEN**

*Style  
of Wimborne*

**Impressive Kitchens**  
**Surprisingly Inexpensive!**

**3, POOLE ROAD, WIMBORNE**  
**TEL : 01202 881039**

# Are you aged 10-18 and interested in the theatre?

FOLLOWING our successful production of *David Copperfield* last September, Wimborne Drama has a number of youngsters clamouring to tread the boards and learn more about the theatre.

We are at the very early stages of forming a Youth Section and envisage an age range of 10-18 years.

If you would like to know more, then please contact:  
Chris Brown, 21 The Broads, Wimborne BH21 4DR  
Telephone (01202) 886191

## FORTHCOMING PRODUCTION

# On The Razzle

**Tom Stoppard's dizzying dazzling Viennese farce**

**Directed by Richard Neal**

**16 - 19 October 2002  
7.30pm**

"There maybe no script in English funnier than *On The Razzle*" - Observer

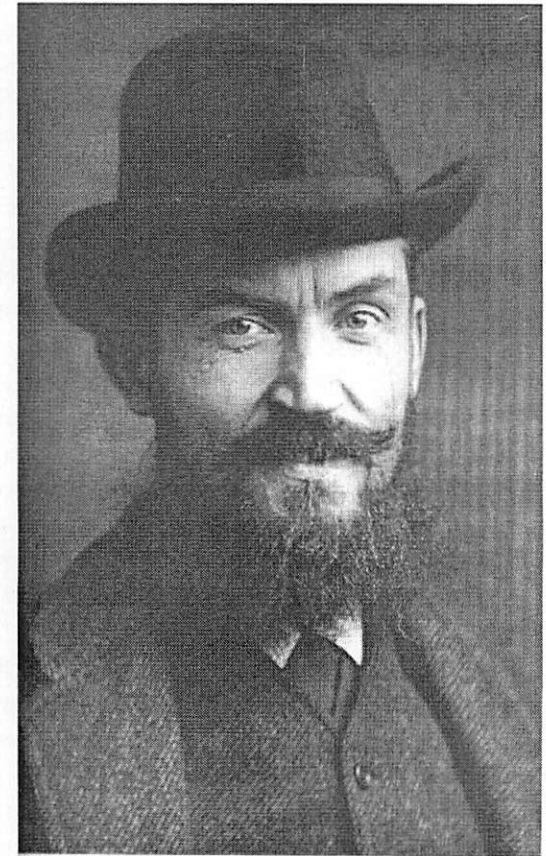
**TIVOLI THEATRE BOX OFFICE (01202) 848014**

# G.B.S. - destroying evil without malice

GEORGE Bernard Shaw was born in Dublin in 1856. His father, George Carr Shaw, a corn miller, was also an alcoholic and therefore there was very little money to spend on his son's education. George Bernard Shaw went to local schools but never went to university and was largely self-taught.

After leaving school he began working in a land agent's office, but by the age of twenty he had decided to go to London and try to make a living by writing. His musical background (his mother was a singer and music teacher) enabled him to get a job as music critic for the *Pall Mall Gazette* and later *The Star* where he wrote under the name Corno di Bassetto. He soon became a book reviewer, art critic and drama critic for the *Saturday Review*. His criticism was considered fresh and invigorating.

In 1882 Shaw heard Henry George lecture on land nationalisation. This had a



Shaw in the 1890s

profound effect on Shaw and helped to develop his ideas on socialism. Shaw joined the Social Democratic Federation and its leader, H. H. Hyndman, introduced him to the works of Karl Marx.

In 1884 Shaw joined the Fabian Society, which would later merge with the Social Democratic Federation to form the Labour Party who had two members elected to parliament in 1900. The society believed that capitalism had created an unjust and inefficient society. The members agreed that the ultimate aim of the group should be to reconstruct "society in accordance with the highest moral possibilities". A number of pamphlets were published, many by Shaw including *The Fabian Manifesto* (1884), *The True Radical Programme* (1887), *Fabian Election Manifesto* (1892), *The Impossibilities of Anarchism* (1893), *Fabianism and the Empire* (1900) and *Socialism for Millionaires* (1901).

By this time Shaw had become an accomplished political speaker and he gave lectures on socialism on street corners and helped distribute political literature. On 13th November 1884 he took part in a demonstration in London that resulted in the Bloody Sunday Riot. However, he always felt uncomfortable with trade union members and preferred debate to action. In 1904 he stood unsuccessfully for election to the London County Council.

Shaw realised before long that the stage could be a valuable way of

spreading his views on social and political reform, and so he turned to writing plays, nearly 50 in all. His first was *Widowers' Houses*, which opened in 1892. *Mrs Warren's Profession*, about poverty and prostitution was completed in 1893, although it was banned from performance until 1925. *Arms and the Man*, dealing with war, class and ideal love, followed in 1894. Other plays with political themes included *Man and Superman* (1902), *John Bull's Other Island* (1904) and *Major Barbara* (1905). These plays dealt with issues such as poverty and women's rights and implied that socialism could help solve the problems created by capitalism. In *The Doctor's Dilemma* (1906) Shaw argued for the establishment of a national health service.

Like many socialists, George Bernard Shaw opposed Britain's involvement in the First World War. He created a great deal of controversy with his provocative pamphlet, *Common Sense About the War* (1914). *Pygmalion*, a comment on the English class structure, was published in 1916.

Shaw's status as a playwright continued to grow after the war and plays such as *Heartbreak House* (1919), *Back to Methuselah* (1921), *Saint Joan* (1923), *The Apple Cart* (1929) and *Too True to be Good* (1932) were favourably

## ENID DAVIES

(Director)

Enid has been involved in theatre since her early teens. She trained at the Central School of Speech and Drama and pursued a career in teaching and performing both at home and abroad. One of her favourite roles was Judith Bliss in Noel Coward's *Hay Fever*. Latterly she has turned more to directing and enjoys watching words on a page come to life on stage. Productions she remembers with particular affection are *The Dresser* with Hutton Players in Essex; and since moving to Wimborne - *Larkrise*, *The Crucible* and *The Owl and the Pussycat*. This is her twelfth production for Wimborne Drama.



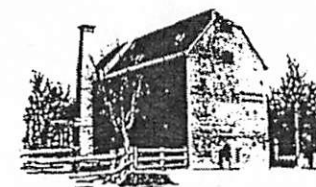
A professional, personal service for the sale and purchase of property throughout the Wimborne area

12 East Street  
Wimborne Minster  
BH21 1DS

Tel: 01202 880374  
Fax: 01202 883681

## Walford Mill Craft Centre

*Exhibition Gallery*  
*Craft Shops*  
*Workshops*  
*and Restaurant*



**FOR THE BEST IN  
CONTEMPORARY  
BRITISH CRAFT**

**Free entry**  
open every day 10am-5pm  
12pm-5pm Sundays  
(closed Mondays, Jan-March)



Stone Lane, Wimborne,  
Dorset, BH21 1NL  
Tel: 01202 841400  
[www.walford-mill.co.uk](http://www.walford-mill.co.uk)

## DAVID PILE (Major Petkoff)



David has been involved in local theatre for almost fifty years, where he has acted in dramas, appeared in

musicals, as well as taking parts in several pantomimes: Widow Twanky in *Aladdin*, St Brioche in *The Merry Widow*, Captain Orton in *The King and I*, and Professor Hinzl in *White Horse Inn*. For Wimborne Drama his credits are Dr Willis in *The Madness of George III*, Donald in *Ten Times Table* George Viccars in *The Roses of Eyam* and Giles Corey in *The Crucible*, and for Swan Theatre, Feste in *Twelfth Night*.

## ANN POND (Raina)



Ann has theatrical experience both backstage, front of house and as an

actress. Onstage Ann has taken the roles of Muriel in *Woman in Mind*, Elizabeth in *A Voyage Round My Father*, Elvira in *Blithe Spirit* and Elizabeth Proctor in *The Crucible*.

She has been stage manager, as well as made sound effects on various productions. Her costume credits include *And So To Bed*, *Forty Years On*, *The Roses of Eyam* and, for Swan Theatre, *Twelfth Night*.

## JAN STEVENSON (Catherine Petkoff)



Jan joined Wimborne drama in 1979 and her first appearances were as the bumbling maid in *George and Margaret* and Ruth in *Blithe Spirit*. Since then she has appeared in many plays including *Dear Octopus*, *Quite Weekend*, *Dangerous Corner*, *Tomb With a View*, *Bedroom*

*Farce*, *One For The Road*, *Sweeney Todd*, *Lord Arthur Savile's Crime*, our 1999 revival of *Blithe Spirit* and *The Crucible*. The snobbish, bossy, wildly patriotic Catherine has been a new challenge greatly relished - Shaw is a joy to perform, says Jan.

received by the critics and in 1925 he was awarded the Nobel prize for literature

Shaw continued to write books and pamphlets on political and social issues. These included *The Crime of Imprisonment* (1922), *Intelligent Woman's Guide to Socialism* (1928) and *Everybody's Political What's What* (1944). George Bernard Shaw remained committed to the socialist cause until his death on 2nd November, 1950.

Many of Shaw's themes are still relevant today. For example the relationship between reality and idealism which was a theme frequently exploited by Shaw.

A favourite question of Shaw's - and it is one he tried to answer in *Arms and the Man* - was how do men and women behave in their pursuit of romance, freedom and identity?

Though his dynamism as a dramatist may have weakened now, respect for his ability to laugh at a great deal of persistent nonsense will endure, as will our appreciation of his wit and ability to write brilliant prose.

Shaw's aims in writing comedy were "to destroy evil without malice, to use the weapon of laughter to make people feel a litter bigger, to laugh themselves out of littleness".

## Director's Notes

GOOD evening and welcome to the Tivoli. We do hope you will enjoy this romantic comedy of love and war, set in Bulgaria - or is it Ruritania? - during the Serbo-Bulgarian war of 1885-86.

It is the first time that Wimborne Drama has presented one of Bernard Shaw's plays and we have enjoyed the challenge. He is a master of words in the vein of Oscar Wilde and Noel Coward. His themes continue to be relevant today - whether it be the relationship between men and women, social injustice or, as in *Arms and the Man*, the absurdities of war, class and ideal love.

I have been so lucky to have a strong, cheerful and hard-working cast, and a great backstage team. I do thank them all and the many friends and members of Wimborne Drama who have lent their expertise and the bits and pieces we needed to create this charming glimpse of Bulgaria.

My thanks must also go to the Tivoli staff, who make this theatre such a warm and friendly place to work in, and finally to you, the audience, for coming to support us. Have a good evening!

Enid Davies

# The first performance

*Arms and the Man* was completed in a great rush. The rehearsals also were hurried and on the first night, 21st April 1894, the actors played with anxious seriousness. They were rewarded with crazy success and the audience laughed excessively.

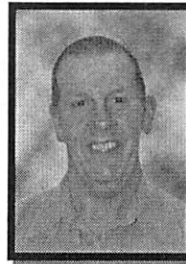
The only hitch was when Brian Gould had to make a remark about the Bulgarian army. By a slip of the tongue he applied it to the British army, and this was more than a lad named Bright, who was sat in the gallery, could bear. He hissed.

When Shaw took his curtain call at the end amid tremendous applause, Bright heroically sent forth a solitary “boo”. Shaw seized upon the interruption to make a speech.

“I quite agree with you, my friend,” he said, “but what can we two do against a whole houseful of the opposite opinion?”



Aubrey Beardsley poster for *Arms and the Man*, 1894



## MELVIN GUDGER (Soldier)

Mel is now a familiar face on the Tivoli stage having previously appeared in *The Crucible* and *The Madness of George III*. Mel is a member of the Wimborne Militia, formed 'to offer accompaniment and protection to The Worshipful Mayor, The Town Council, its members and employees in the face of any threat or rebellion', and to provide spectacle and colour at civic events.

## LUCY HARROLD (Louka)



Since joining Wimborne Drama two years ago, Lucy has enjoyed a variety of roles from Phillipa in *Ten Times*

*Table* to Dora in *David Copperfield*. She is currently studying for her A levels and is also a part-time student of Stagewise Theatre School. Lucy has gained experience whilst appearing in a short film for Bournemouth Film Institute and in a CD Rom for school children. To date Lucy's most enjoyable roles have been Roxie Hart in *Chicago* and Princess So Shi in the Tivoli's production of *Aladdin*.

## MARTIN MATTHEWS (Bluntschli)



Martin directed our sell-out production of *An Inspector Calls*. His acting credits for

Wimborne Drama include William Pitt in the award winning production of *The Madness of George III*, Uriah Heep in *David Copperfield*, Rowland Torre in *The Roses of Eyam* and Dennis in *Habeas Corpus*. He has also appeared in *Sweeney Todd*, *The Crucible* and *No Room For Love*. Shakespearean roles include Lysander in *A Midsummer Night's Dream*, Sir Andrew Aguecheek in *Twelfth Night* and Antipholus of Ephesus in *The Comedy of Errors*.



## JEREMY AUSTIN

(Nicola)



Ever the perfect servant, Nicola lives only to serve, preferably himself, if he can manage it. Custodian of untold family

secrets, he always knows his place, how to keep quiet, and how to extract the maximum advantage from his efforts.

Jeremy was last seen as Inspector Goole in *An Inspector Calls*. Previous roles include DS Troughton in *Run For Your Wife*, Samuel Pepys in *And So To Bed*, Headmaster in *Forty Years On*, Baines in *Lord Arthur Savile's Crime*, Thomas Stanley in *The Roses of Eyam*, Charles in *Blithe Spirit*, Wicksteed in *Habeas Corpus* and Danforth in *The Crucible*.

## CHRIS BROWN

(Russian Officer)

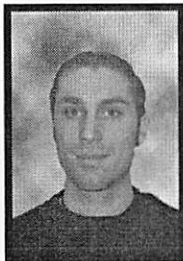


With this role, Chris fears that he is becoming typecast given his military and civic duties

as Town Mayor's Serjant. He is pleased that Wimborne Drama is staging a Shaw play as he spent his childhood in a household of GBS fanatics.

Chris's previous roles on stage include Mr Peggotty in *David Copperfield* and Sir Lucas Pepys in *The Madness of George III*. He has also appeared in *The Roses of Eyam* and *The Crucible*. His film work includes *The World Turned Upside Down* and *Sedgemoor 1685*.

## ALEX COMPIANI (Sergius)



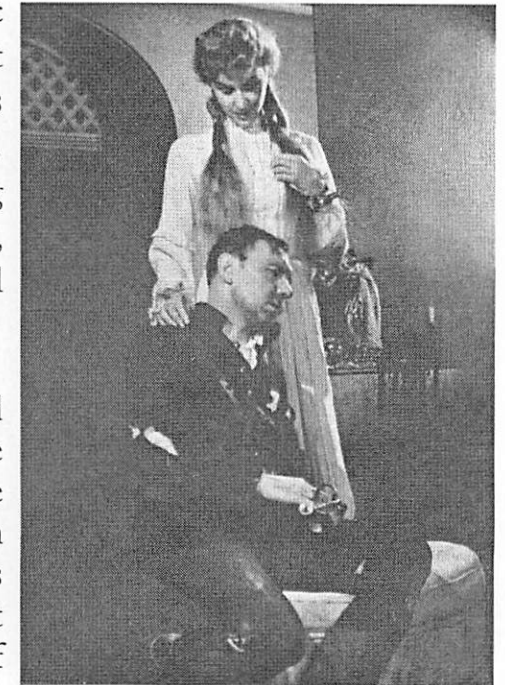
Alex's first stage role was Dundas in *The Madness of George III*. The part of Major Sergius Saranoff should be well suited to Alex who is an active member of the Wimborne Militia as well as being very keen on bungee jumping, parachuting, scuba diving, sword fighting and free climbing!

# What? Don't you love Sergius?

IN August 1944 the Old Vic Theatre Company arrived at the New Theatre, London as part of its season of repertory. Amongst the actors performing were Ralph Richardson, Laurence Olivier, Sybil Thorndike and Joyce Redman.

One of the plays they staged was *Arms and the Man*, the opening performance at the New Theatre being on 5th September 1944. Olivier was disappointed with the part given to him - Sergius Saranoff - feeling that Sergius was a humourless buffoon.

The company had opened their tour at the Opera House, Manchester. The papers praised Richardson's Bluntschli, but were lukewarm about Olivier's Sergius. Guthrie went to the second performance and afterwards walked back to their hotel with Olivier.



Ralph Richardson as Bluntschli with Margaret Leighton as Raina in the Old Vic Theatre Company's 1944 production

"Liked your Sergius," he began. Olivier snorted resentfully indicating how much he hated the role. Guthrie stopped in astonishment.

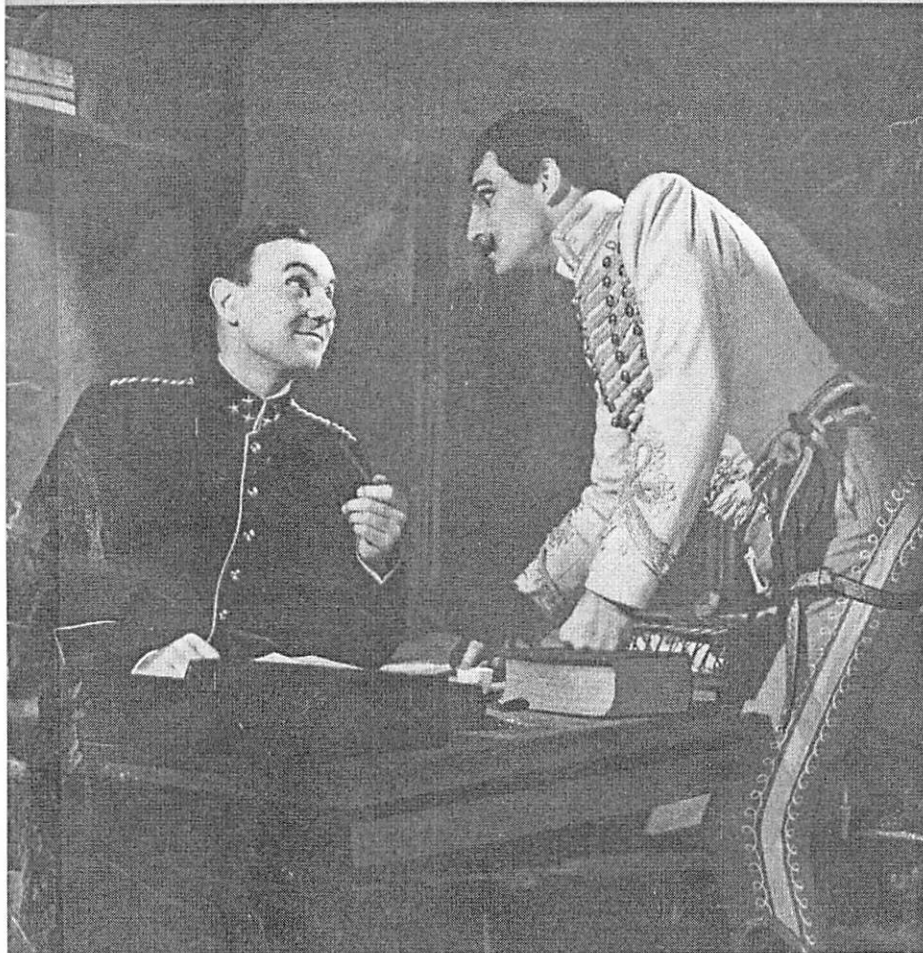
"What? Don't you love

SEPTEMBER, 1944

ONE SHILLING

# THEATRE WORLD

This month: Scenes from "Arms and the Man"



Picture by John Vickers

RALPH RICHARDSON and LAURENCE OLIVIER

**COSTUMES AND WIGS ON HIRE**

**CHAS. H. FOX, LTD.**

Write for Estimates to 184 HIGH HOLBORN, LONDON, W.C.1

Telegram: Theatricals, Westcent, London.

Telephone: Holborn 9557-0

Ralph Richardson (Bluntschli) and Laurence Olivier (Sergius)



In *The Black Brunswicker* (1859-60) by Sir John Everett Millais, a young officer parts from his fiancée

# The Pre-Raphaelites

GEORGE Bernard Shaw was an admirer of the work of the Pre-Raphaelite Brotherhood formed in 1848 by William Holman Hunt, Dante Gabriel Rossetti and John Everett Millais. The 'PRB' attempted to rediscover the authenticity and realism they felt painting had lost since the time of Raphael, the 16th century Italian Renaissance painter. They thus rejected the idea that the artist should manipulate an image into his (or her) own ideal vision of beauty; they paid attention to carefully and accurately representing colours and other details within their art. They also believed they could reform society through their art.

Influenced by the writer John Ruskin, the PRB took their



*The Knight's Farewell* (1858) by Edward Burne-Jones

inspiration from religious, medieval, literary or mythological texts, expressing themselves in writings, including criticism and poetry, the visual arts and, later with Edward Burne-Jones and William Morris, the decorative arts. Allegories of romantic love and tragedy - a topic close to Bernard Shaw's heart - were a popular subject matter.

In their day the PRB caused controversy in the art world. Charles Dickens wrote in a letter to *The Times*, 7th May 1851: "Their faith seems to consist in an absolute contempt for perspective and the known laws of light and shade, and aversion to beauty in every shape, and a singular devotion to the minute accidents of their subjects, including, or rather seeking out, every excess of sharpness and deformity."

Today, however, their legacy is admired for its symbolic richness and pictorial power.

Aubrey Beardsley, another follower of Pre-Raphaelitism, designed the poster for the first production of *Arms and the Man* in 1894.

Sergius?"

Olivier retorted: "What? Love that stooge?"

Guthrie simply replied: "Well, of course, if you can't love him, you'll never be any good in him, will you?"

This response, Olivier later admitted, "changed the course of my actor's thinking for the rest of my life". By the time they opened in London, his performance had become a "joyous travesty" and "a museum of invention"; business boomed and the



Margaret Leighton (Raina) and Laurence Olivier (Sergius)

spirits of the whole company soared.

Shaw took the title for his play from Dryden's translation of the first line of Virgil's epic poem *The Aeneid* - 'Arma virumque cano' - which means 'Of arms and the man I sing'

~ ~ ~

"For me, the play is not the thing.... For art's sake alone I would not face the toil of writing a single sentence" (George Bernard Shaw)

# ARMS and the MAN

by Bernard Shaw

RAINA PETKOFF

Ann Pond

CATHERINE PETKOFF, her mother

Jan Stevenson

MAJOR PAUL PETKOFF, her father

David Pile

CAPTAIN BLUNTSCHLI

Martin Matthews

MAJOR SERGIUS SARANOFF

Alex Compiani

LOUKA

Lucy Harrold

NICOLA

Jeremy Austin

RUSSIAN OFFICER

Chris Brown

SOLDIER

Melvin Gudger

The action takes place in Major Petkoff's house in a small town near the Dragoman Pass, Bulgaria

Act I A lady's bedchamber. One night in November 1885

Act II The garden. A fine spring morning 1886

Act III The library, after lunch, the same day

There will be a short pause between Acts I and II, and an interval of 15 minutes after Act II

~~~~~  
DIRECTOR Enid Davies

DESIGNER Amanda Brown

COMPANY STAGE MANAGER Peter Brooks

PROPERTIES Carolyn Hewitt & Jackson Kingham

BACKSTAGE ASSISTANTS Kate Compiani Tracey Nicholls  
Howard Lovejoy Caroline Uwins Mark Ellen  
Melvin Gudger Fred Tyson-Brown & Vicki Ballard

MAKE-UP Chrissie Neal & Kirsty Matthews

THEATRE STAGE MANAGER Ashley Thorne

LIGHTING & SOUND Tivoli Theatre Technicians

~~~~~  
PRODUCTION CREDITS:

Costumes by ECLECTIA COSTUMES  
Wigs by SHOWBIZ! SOUTHAMPTON  
Chocolates by MINSTER CHOCOLATES  
Flowers by MINSTER FLOWERS  
With special thanks to  
FOLEY'S FURNITURE & ANTIQUES