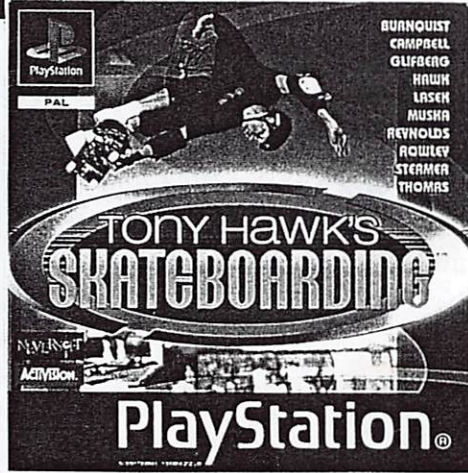


# digital Arena

...at Wimborne Newsagency, 43 East St. Wimborne.



**The largest local stockists  
of Playstation and PC  
games in Wimborne**

website: [www.digital-arena.co.uk](http://www.digital-arena.co.uk)

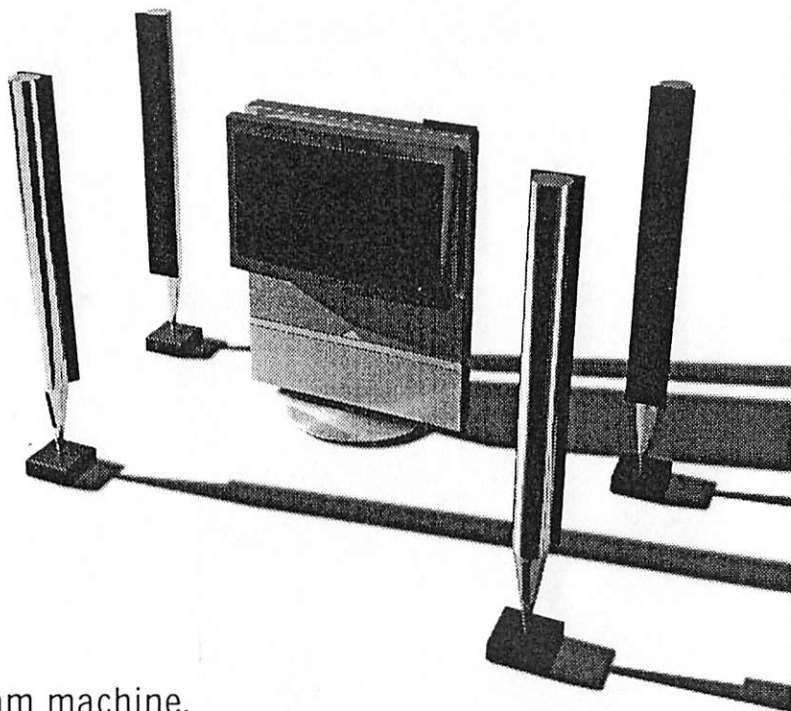
e-mail: [digi@digital-arena.co.uk](mailto:digi@digital-arena.co.uk)

Oct. 1999  
(Dr. Young)

## CELEBRATING NOEL COWARD'S CENTENARY BLITHE SPIRIT



a  
supernatural comedy *G. STONE*



## Dream machine.

It'll take you to the best seats in the theatre or to the front row of the concert hall. To the bottom of the sea, or to the ends of the universe.

The **BeoVision Avant 32"** has a built-in video recorder, a surround sound system and our largest picture to date. And with four active loudspeakers on hand, you're always assured to be at the centre of every performance.

It's the entire world of Bang & Olufsen.

BANG & OLUFSEN **B&O**

## Bang & Olufsen of Wimborne Minster

8 East Street, Wimborne Minster, Dorset, BH21 1DS. Telephone: 01202 840840



**John March (Firearms) Limited  
Gunsmiths  
26 West Street  
Wimborne  
Dorset BH21 1JS  
Tel: (01202) 888504**

### For a Special Wedding Ceremony Hire our Historic and Elegant Council Chamber

The Council Chamber and some small rooms/offices are available to hire for functions, conferences, courses and meetings

For further information call in at the Town Hall, 37 West Borough, Wimborne or telephone 01202 881655

**Wimborne Minster Town Council**

### SPORTS & FISHING

for information on local sporting activities together with a wide selection of sports equipment and fishing tackle

### MINSTER SPORTS

8 West Street  
Wimborne  
Dorset BH21 1JP  
Tel: 01202 882240

## The King's Head

The Square, Wimborne Minster, Dorset BH21 1JA  
Telephone 01202 880101

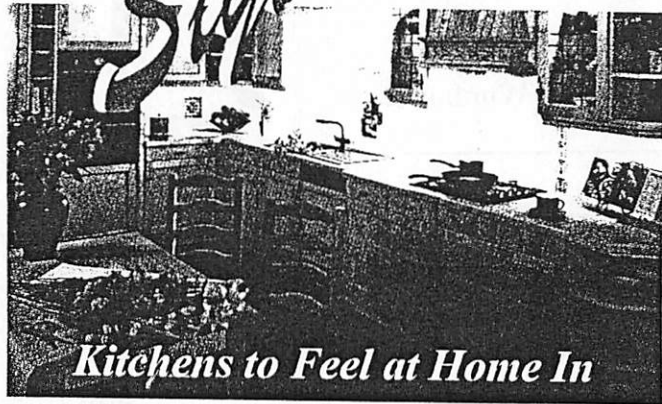
OPEN ALL DAY

FOR FOOD

AND BEVERAGES

KITCHEN

*Style* of Wimborne



*Kitchens to Feel at Home In*

*3, Poole Road, Wimborne*

*01202 881039*

THE SQUARE CORNER

&

MINSTER CHOCOLATES

Cards \* Gifts \* Cookware

*Retailer of fine hand-made  
English and Belgian chocolates*

Stockists of Spode, Denby,  
Woods of Windsor  
Dean's collectable bears  
and much, much more

Loose Belgian diabetic  
chocolates now in stock

The Square Corner  
7 the Square, Wimborne Minster  
01202 881886

Find us at  
The Square Corner  
7 the Square, Wimborne Minster  
01202 881886



*Salamander*

THE  
GOOD  
COOKS'  
SHOP

at

57 High Street  
Wimborne  
Dorset BH21 1HS  
Tel/Fax: 01202 840144

&

29b Cheap Street  
Sherborne  
Dorset DT9 3PU  
Tel/Fax: 01935 817161

*Your friendly independent dealer*

# BRIAN DRYDEN

DOMESTIC APPLIANCE CENTRE

Electrolux \* Panasonic \* Numatic \* VAX \* Hoover

EURONICS  
CENTRE

EUROPE'S BIGGEST INDEPENDENT  
ELECTRICAL BUYING GROUP

THE POWER  
BEHIND  
THE PRICE

No 1 The Square, Wimborne 886450  
and Crossways, 175 Station Road, West Moors 876869

A warm welcome awaits you  
from Ron, Joanne & Staff at

**The Rising Sun**  
38 East Street, Wimborne

**\*\* Open all day every day \*\***

LIVE MUSIC  
HOME COOKED FOOD  
QUIZ NIGHTS  
FAMILIES WELCOME  
SKY T.V.  
TRADITIONAL SUNDAY LUNCHEONS  
DISCO NIGHT



**THE BELL  
HOTEL**

*serving excellent*

*Real Ale*

*and fine*

*Ringwood Wines*

*D W Burton*

**Traditional Family Butchers**

**Dorset's Leading Game Dealer**

**Fresh**

**Rabbits  
Venison**

**Hares  
Pheasant**

**Local Beef  
Dorset Lamb  
Somerset Pork**

**39 East Street, Wimborne  
01202 883078**

## CLOISTERS



40 EAST STREET  
WIMBORNE  
DORSET  
Telephone 880593

- Fresh ground coffee -
- Home made cakes & pastries -
- Home made soups -
- Full & varied lunch menu -
- A selection of children's meals -
- Breakfast -
- Afternoon teas -

*Our full menu is available all day*

**NOW OPEN FOR  
SUNDAY LUNCH**

Though many of his witticisms have passed into everyday use, we make no apology for repeating here some of our favourite Noël Coward *bon mots*.

An enthusiastic letter-writer, Noël Coward was nevertheless very particular about the mode of address. Responding to an overblown missive from one of America's corporate magnates which began, 'From the desk of . . .', Coward replied, 'Dear Desk of . . .'

While studiously avoiding fame in the RAF, Lawrence of Arabia received a letter from Coward which began 'Dear 338171, or may I call you 338 . . .?'

He loved sending telegrams too. He once wired a friend, 'AM BACK FROM ISTAMBUL WHERE I WAS KNOWN AS ENGLISH DELIGHT'.

Another enthusiasm was travel. After an uncomfortable night in a hotel in the tropics, during which he received the attention of gnawing insects, Coward was settling his bill when the manager approached to ask, 'Excuse me, sir. Would you mind very much if I put up a sign reading "Noël Coward Slept Here"?'

'Not at all,' replied Coward, 'if you'll add one word -fitfully.'

He could be equally abrasive closer to home. In a West-End restaurant once, Coward laboured with the woodcock he had been served. 'I do hope, sir', the waiter enquired unctuously, 'that you found no shot in it?' 'No . . . no', replied Coward, 'it died a natural death.'

'Trouble is,' he added, poking the bird with his knife, 'There's too much wood and not enough cock.'

It could be trying to have Noël Coward as your friend. When Laurence Olivier wrote to tell Coward that he was to be a Doctor of Letters, Coward's remark was, 'Doctor of four letters; no doubt.'

When news reached him that an impresario whose slow wits had never endeared him to Coward had blown his brains out, the Master's only comment was, 'He must have been a marvellously good shot.'

## Bells Opticians

- \* Wide range of frames & lenses \*
- \* Professional family eye care \*
- \* Full eye examination \*
- \* Children's eye care \*
- \* Low visual aids \*
- \* Contact lenses \*

Jane Bell BSc FCOptom  
Mark Bell FBDO

1F Poole Road, Wimborne  
01202 886666

\*\*\*

\*\*\*

## The Dormers

There is something for everyone  
at The Dormers

Choose from our a la carte or snack  
menus with options for children,  
vegetarians & for our 'senior  
guests', smaller sized meals

A fine selection of beers & real ales  
including the famous Tanglefoot

Function room for hire

East Borough, Wimborne  
Tel: (01202) 884686

## DIRECTORS NOTES

Good Evening and welcome to tonight's performance at the Tivoli.  
When we were deciding which play we would perform next, and realised that 1999 saw Noel Coward's centenary, there was only one choice for me. Blithe Spirit sees Coward at his best; sparkling dialogue and social comment written into a genuinely funny play.

Since our last performance of "The Roses of Eyam" back in May the club has been busy assembling a strong line-up of plays for our 1999-2000 season and "Blithe Spirit" starts us off in fine fashion. There are just too many people involved to thank individually but praise must go to the cast themselves for getting together as a team so quickly, and also to the backstage crew and the Tivoli staff for providing everything I wanted quickly and efficiently, presenting an impressively authentic-looking set.

Finally I am pleased to instigate a Wimborne Drama first at the Tivoli - the use of the curtain! (Bear with us on this one.) I hope you enjoy the show, and thanks for supporting us.

Paul Dodman

## ALAN CARTER MOTOR ENGINEERING

M.O.T. TESTING  
By Appointment  
While You Wait

- \* Mechanical Repairs \*
- \* Servicing \*
- \* Cars and Light Commercial \*
- \* Tyres \*
- \* Free Collection & Delivery \*

(01202) 880754

Unit 7 Trinity Ind Est, Brook Rd, Wimborne

## WIMBORNE HERBAL CLINIC



Linda Harrold  
Registered Medical Herbalist

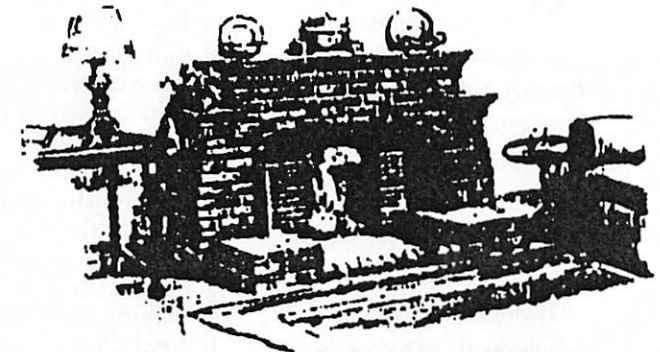
Free 15 minute consultation

Purbeck House  
5 West Borough  
Wimborne Minster  
Dorset BH21 1LT  
01202 888272

## sticks and stones (fireplaces)

Traditional & Modern Fireplaces

Always a warm  
welcome  
in the hottest  
spot in town!



Patrons Of



1 - 2 West Row, Wimborne Minster Dorset. BH21 1LA  
Tel: 01202 880170 - Fax 01202 881036

**Panasonic / Technics  
Sales & Service Centres**

1 - 4 King Street  
Wimborne Minster  
01202 882785

44 Victoria Road  
Ferndown  
01202 876699



Morning coffee  
Light lunches  
Freshly baked baguettes  
Afternoon teas  
Home made cakes

Clive & Sandra Henry  
4 West Borough  
Wimborne Minster  
telephone 01202 840676

**THE NOEL COWARD**

Noel Coward was born December 16 1899 in the London suburb of Teddington. His parents were Arthur Coward, a piano salesman, and Violet Veitch, descended from gentry and naval officers. Noel was raised in genteel poverty. As a child he appeared in school and community performances and made his professional debut at the age of eleven in a children's play called *The Goldfish*. Parts followed in *The Great Name* and *Where the Rainbow Ends* (a Christmas-time standard in London for the next forty years), in the company of which was Esme Wynne, who became Noel's intimate friend, supporter and collaborator. When the play's run ended, Violet Coward took her son on the rounds of theatrical agencies, despite the disapproval of relatives who regarded the stage as no place for a boy. Attending a music hall mind-reading act, Violet asked the clairvoyant if her son should continue in the theatre. From the stage the mind-reader intoned: "You ask me about your son, Noel Coward. Keep him where he is, keep him where he is, he has a great talent and will have a wonderful career!" Violet was convinced.

So was Noel. He was fifteen when he told his friend Esme "I am going to have the whole theatrical world at my feet". He was a precocious boy, apparently charming, with a good ear for music and an excellent sense of humour. He had the talent of meeting people and making connections, and making the people he met his friends. Noel Coward went on the road for the first time in 1939 with a production of



**'Dr. Bradman'  
Brian Scottford**

"Blithe Spirit" has some lovely subtle touches that merit your concentration. As for Dr. Bradman, I see him as a well-meaning old buffer who I wouldn't care to consult about anything worse than a slight strain. I console myself with the thought that he must have some hidden depths that cause his wife to stay with him despite his attitude towards her.



**'Mrs Bradman'  
Val Mantle**

Mrs Bradman is described as 'fair and rather faded'. She is the devoted and rather meek little wife of a G.P. who is occasionally 'put down' by her husband. She obviously doesn't have much of a social life and when the rare opportunity occurs for a visit, she tends to talk too much and giggle nervously.



**'Madame Arcati'  
Jan Stevenson**

She comes over as a daft old biddy, but she really believes in what she does. She is full of vim and vigour, as you might say. Nothing fazes her, but she can not tolerate people who mock her profession. I think that Noel Coward put her in the play in a 'spirit of mockery', but she manages to come out on top with her 'tricks of the trade'.



**'Elvira'  
Ann Pond**

I am told, for in truth I know little, that 'the smart sophistication, technical accomplishment & convention-defying morality of Noel Coward's plays captured the public of the day. The little I do know is Blithe Spirit; celluloid version. If I am the public, it captured me. The nuances of speech, politeness turning almost vitriolic; established middle-class routine disintegrating into chaos; smug and cosy becoming dissatisfied ice. Elvira was always my favourite - butter wouldn't melt turning to rancid conglomerate. I wanted to play her but, in a way, hope I can't do her justice. I mean, who wants to be a petulant, self-centred, scheming, immoral, predatory bitch?

P  
r  
i  
m  
i  
z  
i  
a  
C  
a  
f  
e  
b  
o  
o  
k  
i  
n  
g  
t  
r  
y  
u  
s  
...  
y  
o  
u  
w  
o  
n  
't  
b  
e  
d  
i  
s  
a  
p  
p  
o  
i  
n  
t  
e  
d!

**Primizia**

Cafe / Bistro

26 West Borough  
Wimborne Minster  
Dorset BH21 1NP

Tel: 01202 883518

French & Italian  
cuisine

Open daily for  
coffee and lunch,  
and for  
evening meals  
Wednesday &  
Saturday

Situated opposite  
The  
Tivoli  
Theatre

Pre-theatre  
bookings  
welcome

try us ...

you won't be  
disappointed!

INTERFLORA



**Minster flowers**



8 The Square  
Wimborne Minster  
01202 884354

Send love - send flowers

Don't let your wives haunt you!  
Show some spirit and  
give them flowers!!

Comments from the Cast ...



**'Charles'  
Jeremy Austin**

Whilst he could never be described as a social realist, Noel Coward has the knack of persuading us that even if the world described in "Blithe Spirit" may never actually have existed, certainly it ought to have. Utterly roused by the arrival of Mme Arcati, poor Charles' orderly existence lurches from disaster to disaster. My favourite line from the part? There are many but one of the best must be "If you don't behave yourself I won't take you into Folkestone, ever!" Hardest line to remember? I keep forgetting!



**'Ruth'  
Judy Garrett**

When offered the role I was very surprised but pleased - I had been very impressed with the Wimborne Drama productions I had seen but I had never expected the opportunity to perform on the Tivoli stage. Rehearsals have been a true comedy throughout. Ruth's character appears to be in a state of permanent hysteria. My favourite line is 'I've not the slightest desire to look at your tongue, kindly put it in again'. I have to control the desire to giggle as my stage husband Charles' face is such a scream! I will be nervous but hope I can do justice to the character in Noel Coward's centenary year.



**'Edith'  
Heather Shew**

Although not a demanding role ('Yes'm' has to be my favourite line!), Edith has been a most enjoyable part to perform. Coward's description of her as merely 'a maid' doesn't do the part justice, since it is she who is pivotal to the plot and is responsible for the fates of Ruth, Charles and Elvira. Her willingness to please, failed attempts at efficiency and sheer lack of experience certainly add humour to the play! Edith is a scatty, forgetful and clumsy young girl - I just hope I wasn't type-cast!

CENTENARY

Gerhart Hauptmann's *Hannele* in Liverpool. Among the other young actors on the train to Liverpool he was instantly charmed by Gertrude Lawrence, a "vivacious child with ringlets", whose later partnership with Coward in *Private Lives* and *Tonight at 8:30* became legendary. Role followed role through Coward's teenage years, including a cameo appearance with Lillian Gish in D. W. Griffiths' film *Hearts of the World*. He was drafted into the army in 1918, the last year of World War I, but spent a large percentage of his service in army hospitals with various nervous ailments.

With the end of the war England needed to be entertained, to delight in something that could replace the scenes of horror and destruction. Coward was well-positioned for the moment. He was being reviewed regularly as an actor in the London press. And since 1914 he had been writing songs, stories, and sketches in collaboration with Esme Wynne, a couple of which had been produced. He experimented with novels, sold a few short stories, and wrote script after script. In 1919 the option on one script, *The Rat Trap*, was picked up by a New York producer and led to a commission for another play. *I'll Leave It To You*, shallow but filled with clever and witty dialogue, opened in 1920 with Coward and Esme Wynne in the cast. Rebecca West reviewed it, saying "If one wants to be, so to speak, in at the birth of a considerable dramatic talent, it is worth going to *'I'll Leave It To You'*". Another critic wrote that the reason

**Saville Travel**

An  
independent  
family business  
offering a friendly  
personal service for all  
your holiday and business  
requirements

ABTA BONDED  
High Street  
Wimborne Minster  
BH21 1NF

tel: 01202 882266  
fax: 01202 880077

**The White Hart**



Daily Specials \* Sunday Lunch  
Home cooked meals from £2.95

The Cornmarket  
Wimborne Minster  
Telephone: 01202 883793



A professional, personal service for the sale and purchase of property throughout the Wimborne area.

12 East Street  
Wimborne Minster BH21 1DS

Tel: 91292 880374 - Fax: 01202 883681

## F C DOUCH & SONS (FUNERALS) LTD

\*

Chapels of Rest

Floral Tributes

Memorials

Pre-arranged and Pre-paid  
Funeral Plans

7 Leigh Road, Wimborne  
01202 882936  
day or night

for the success of the play was "... simply that the author, himself not yet 21, has endowed everybody in it with the spirit and freshness of youth."

Coward continued the theme with *The Young Idea* (loosely based on G. B. Shaw's *You Never Can Tell*), which he wrote in 1921 just before his first visit to New York, and in which he appeared in London in 1923. This was followed in 1924 by *The Vortex*, a turn against the excesses of post-war society, which barely got past the censors of the Lord Chamberlain's Office - the play depicts an older woman with a young lover, cocaine use, and hints of homosexual relationships. The next year he finished *Fallen Angels*, *Hay Fever*, and *Easy Virtue*. At one point Coward had five of his works playing simultaneously in London.

By 1926, when Coward was touring America in *The Vortex*, he was an established theatre celebrity on both sides of the Atlantic, with some of his most enduring works yet to come.

*Private Lives*, written for himself and Gertrude Lawrence, premiered in 1930, his patriotic panorama, *Cavalcade*, in 1931, and *Design for Living* in 1933. Other plays that followed include 1936's *Tonight at 8:30*, (also for Gertrude Lawrence), *Present Laughter* and *This Happy Breed* in 1939, *Blithe Spirit* (1942), *Quadrille* (1952), and *Nude With Violin* (1957).

Coward's talent extended in many other directions as well. He wrote, directed, and starred in *In Which We Serve* (1942), his World War II tribute to the Royal Navy. He wrote dozens of brilliant songs, including "Mad About the Boy", "Mad Dogs and

## Philip Brown Violins

An interesting selection of good Violins, Violas and Celli usually available.

\*\*\*\*

Mail order-service for wide range of strings and accessories.

**Mention this advert for a 10% discount.**

All major cards accepted.

\*\*\*\*

Bows can be sent free on a ten day approval period

Philip Brown Violins  
85a Northbrook Street  
Newbury, Berkshire  
RG14 1AE  
Tel 01635 35465

## WIMBORNE DRAMA PRESENTS

### HABEAS CORPUS

by Alan Bennett

16th to 19th Feb 2000

Directed by Barry Baynton

### THE CRUCIBLE

by Arthur Miller

24th - 27th May 2000

Directed by Enid Davies





LACKING MILLENNIUM SPIRIT?  
LET WINE RACK DO THE WORK!  
WE STOCK A COMPREHENSIVE SELECTION OF WINES,  
BEERS AND SPIRITS WITH GENEROUS BULK  
DISCOUNTS FOR YOUR PARTY,  
PLUS:  
THE LARGEST CHAMPAGNE RANGE IN EUROPE!  
10 HIGH STREET, WIMBORNE  
TEL: 01202 848977

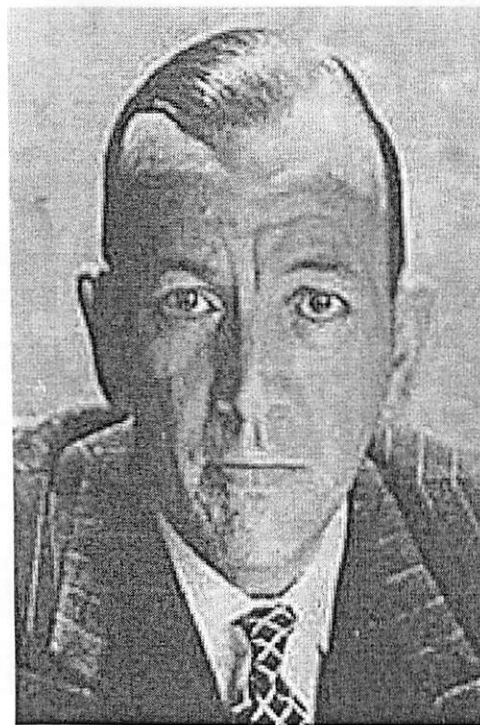
### Hotel Riviera

Terry and Brenda Tokely welcome you to the Hotel Riviera. With their RAC Hospitality, Service and Comfort awards, their experience shines through and you will certainly feel "at home", as every effort is made to ensure that you are as comfortable as possible.

- \* Car parking space \* All rooms en suite \* Night porter \*
- \* Colour television, radio and telephone in all rooms \*
- \* Fully centrally heated \* Lift to all floors \* Entertainment \*
- \* Lunch-time bar menu \* Children's high teas provided \*
- \* Close to the town and the beach \*

Westcliff Gardens, Bournemouth BH2 5HL  
Telephone: (01202) 552845    Guests: (01202) 290289

Englishmen", and "Don't Let's Be Beasty To The Germans". In the 1950s he established a second career for himself as a cabaret entertainer and became one of the first artists to make Las Vegas a regular tour stop. Noel Coward loved to travel, and although he maintained a home in England most of his life, he spent much of his time voyaging to every continent. Several of his plays, including *Design for Living*, were written aboard ship. In 1956 he took up residence in Bermuda to avoid the tax situation in England. Later he lived briefly in Switzerland before settling in Jamaica, his home for the rest of his life. In 1970 he was honoured with a knighthood in his native land. In 1971 he was given a Tony Award for Distinguished Achievement in the Theatre. Noel Coward died March 26, 1973 at his home "Firefly" in Jamaica.



### BARGAINS "R" US

- . HOUSEHOLD GOODS .
- . GREETINGS CARDS .
- . STATIONERY .
- . WOOL .
- . TOYS .

WHOLESALE AND RETAIL

17 CROWN MEAD CENTRE  
TEL: 01202 841222

### "Just a Second"

China & Giftware

From Around The World

46b Cheap Street

Sherborne

Dorset DT9 3AZ

Tel: 01935 - 813831

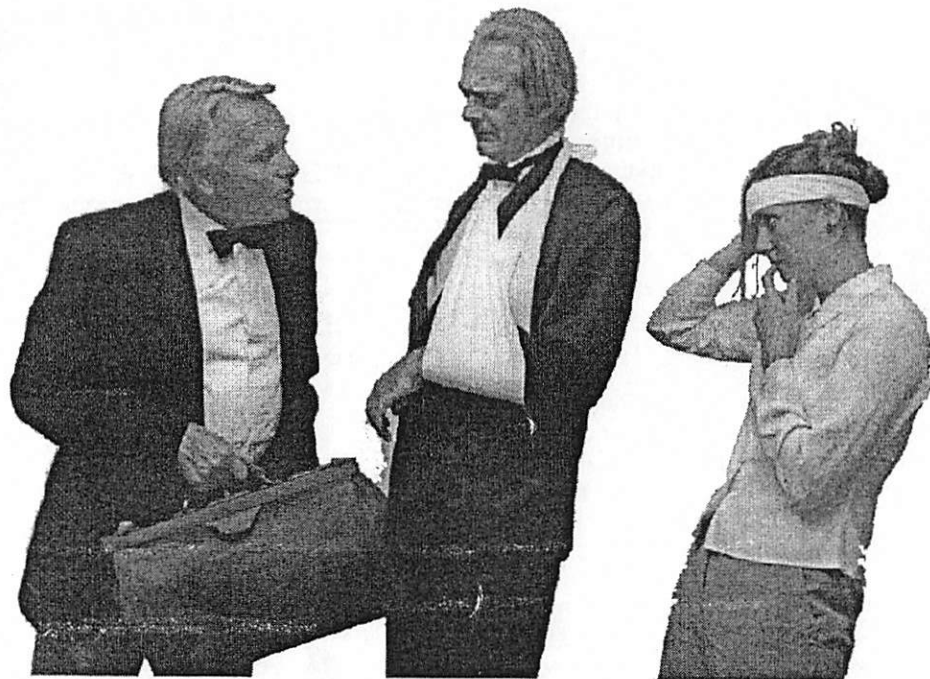
Fax: 01747 - 828383

49 High Street

Wimborne

Dorset BH21 1HS

Tel: 01202 - 840640



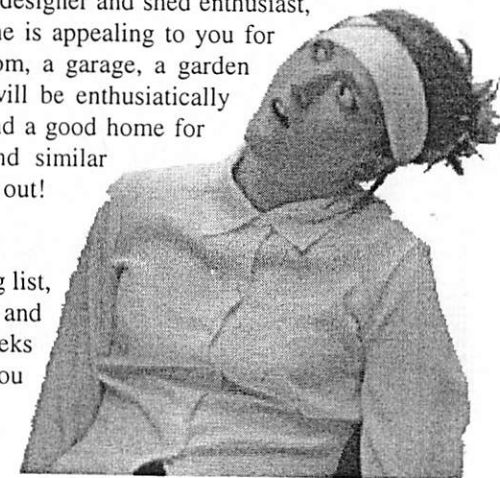
# Don't just *SIT* there...

## We want to be patronised!

If you have attended our last three productions, well done! Perhaps you would like to think about becoming a patron of Wimborne Drama? For £15 you receive full details of all our forthcoming productions, priority seating for twelve months, the Patagonian Order of Merit, and the opportunity to meet the cast at our after-show get together. (Patagonian Order of Merit only available in green).

## Amanda's final frontier.

Things have been getting very tight for our set designer and shed enthusiast, Amanda Brown. A girl with specific needs, she is appealing to you for more space. Anyone who can spare some room, a garage, a garden shed, an aircraft hanger, or what have you, will be enthusiastically embraced by Amada, whose only urge is to find a good home for her props, stage flats, weights and stays, and similar paraphernalia. Do try to help her, time is running out!



## Get on our mailing list.

If you want to be on Wimborne Drama's mailing list, just use the coupon below to send us your name and address. We will write to you about two weeks before each of our productions to remind you what's coming up and exactly when it's on.

## Get in on the act.

Wimborne Drama is looking for new blood. Bring us yours!

- ◆ Phone Carolyn Hewitt on 245376
- ◆ Come to any of our meetings on the last Thursday in the month
- ◆ Fill in your details below and drop them in the collection box in the foyer
- ◆ Alternatively send them to Mr Paul Dodman, 51, Newborough Road, Wimborne

Name
Address
Phone

Please tick:-

- ◆ Patrons
- ◆ Storage
- ◆ Mailing list
- ◆ Membership



Your local family-owned store for all those home furnishing requirements

Furniture - Beds - Upholstery - Curtains

Carpets - Bedding - Household Linen

Free delivery

Free parking

Free measuring service

**Sturtons & Tappers**

**East Street, Wimborne. 01202 883311**

*Customer parking at rear of shop in Park Lane*

Branches also at

426 Wimborne Road

Behind Halfords on the

Winton, Bournemouth. 01202 512345

Southampton Road, Salisbury 01722 335003

CHANGING HOMES

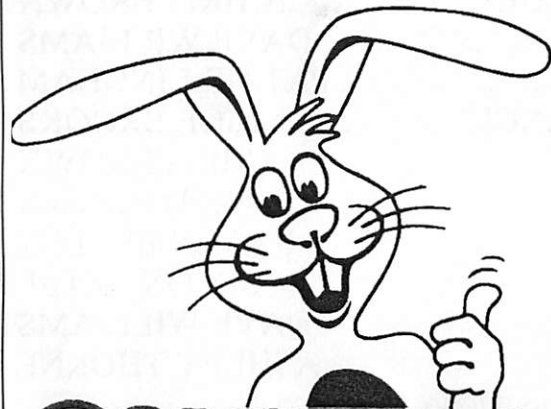
WIMBORNE

3 East Street Wimborne Dorset BH21 1DS Tel: 01202 883331

Wimborne's Newest Independent Estate Agents

Call in and meet our friendly and helpful staff  
who will show you the latest computer technology  
and the most up to date way of marketing your home.

For a free Valuation, with no obligation, phone  
01202 883331



Guinea Pigs, Rabbits  
Finches, Budgies,  
Cages, Toys,  
Accessories,  
Science Diets  
Reptile Foods,  
Loose feeds,  
& bagged feeds,

**COMPANIONS  
PET STORE**

69 High Street • Wimborne  
Tel: 883673

Family run  
with plenty  
experience,  
friendliness  
and care

# CLARKE & PARTNERS

INDEPENDENT

INVESTMENTS • PENSIONS

TAX PLANNING • SCHOOL FEES

MORTGAGE ADVICE\*

For the Best Advice, financially speaking, contact us at:

Purbeck House, 5 West Borough, Wimborne BH21 1LT

Tel: 01202 889707 Fax: 01202 885808 e.mail clarke pts@aol.com

Clarke & Partners Independent is the trading name of Elder Clarke & Co Ltd.

A Member of The Burns-Anderson Independent Network PLC  
for investment business



Personal • Investment • Authority

Regulated by the Personal Investment Authority

\*Mortgages are not regulated by the PIA



♀

♂

## ASTROLOGY

Birth charts with analysis make unusual presents

Give something unique to the  
special people in your life, or treat  
yourself because you're special too!

Further information? 'Phone Patricia  
01202 848658

♄

♃

# BLITHE

# SPIRIT

BY NOEL COWARD

## CAST

(in order of appearance)

EDITH the maid .. .. .	HEATHER SHEW
RUTH .. .. .	JUDY GARRETT
CHARLES .. .. .	JEREMY AUSTIN
DR. BRADMAN .. .. .	BRIAN SCOTFORD
MRS BRADMAN .. .. .	VAL MANTLE
MADAME ARCATI .. .. .	JAN STEVENSON
ELVIRA .. .. .	ANN POND

**DIRECTED BY PAUL DODMAN**

The action of the play takes place in the drawing room of the Condomines' house in Kent. Time - the late 1930's.

...oooOooo...

ACT 1    Scene i    Before dinner  
          Scene ii    After dinner  
          Scene iii    The next morning  
          Scene iv    The following afternoon

**20 MINUTE INTERVAL**

ACT II    Scene i    Early evening, a few days later  
          Scene ii    After dinner, a few days later  
          Scene iii    Several hours later

## BACKSTAGE

COMPANY STAGE MANAGER ..	MARTIN MATTHEWS
TIVOLI STAGE MANAGER .. ..	CAROLYNE HOWE
SET DESIGN .. .. .	AMANDA BROWN
COSTUME DESIGN .. .. .	CAROLYN HEWITT
	FREDDIE FIELD
SPECIALIST PROPERTIES .. ..	EDDIE COLTON
	SALIANN COLTON
PROMPT .. .. .	BARRY BAYNTON
MAKE-UP EFFECTS .. .. .	CLARE DOWNS
LIGHTING AND SOUND .. .. .	RUSSELL PARKER
POSTER DESIGN .. .. .	GEOFF STONE
ADVERTISING REVENUE .. .. .	CHRIS BROWN
PUBLICITY .. .. .	DAVE WILLIAMS
PROGRAMME NOTES .. .. .	PAT GILLINGHAM
BACKSTAGE ASSISTANCE .. .. .	JOE BROOKS
	CHRIS BROWN
	FRED BROWN
	KAREN BUTLER
	SIMON PATEL
	DAVE WILLIAMS
	ASHLEY THORNE

...oooOooo...

MANY THANKS ... WIMBORNE EMPORIUM, THE KINGS  
HEAD HOTEL, MINSTER FLOWERS, JUST A SECOND  
AND ALL OUR PATRONS AND ADVERTISERS

"BLITHE SPIRIT" was presented by WIMBORNE DRAMA at the Tivoli Theatre October 20th - 23rd 1999